



Remote Reading and Management System for water, gas and heat

Plovdiv
12.12.2013



Company Info

ADD Bulgaria has been established in 2006. The main area of business activities is development and implementation of technologies for data processing and data transfer based on the latest achievements in the communication over PL on LV/MV, RF, GSM/GPRS, ETHERNET

Mission

Development and implementation of high technological solutions for Smart Metering, Smart Home, Smart Grid

Vission

Internationally recognized as a leader with our products and services in Smart systems



Business customers





Strategy

Strategy execution

High quality
Research and
Development
process

Listen to
Customer's needs
and feedback

ERP and Billing
systems
integration

Complex
solutions for Utility
companies

Integration in
Smart Home

Reading
Monitoring
Data transfer

Consumption
management by
the customers

Peak loads
management and
additional
devices

Standard
Technological
solutions

HW & SW
compatibility
with products from
different vendors



Four capabilities drive the benefits of Smart Metering

Create

Devices and Sensors to capture the information

Collect

Equipment used to transmit the information to business applications

Manage

Software used to monitor devices and collect data

Utilize

Analytics and Applications Software that adds value to the Information

Devices and Sensors to capture the information

Communication equipment and infrastructure required to communicate with devices

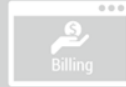
Software that enables customers to manage and connect to premises and devices

Applications that use the information generated by devices or business functions



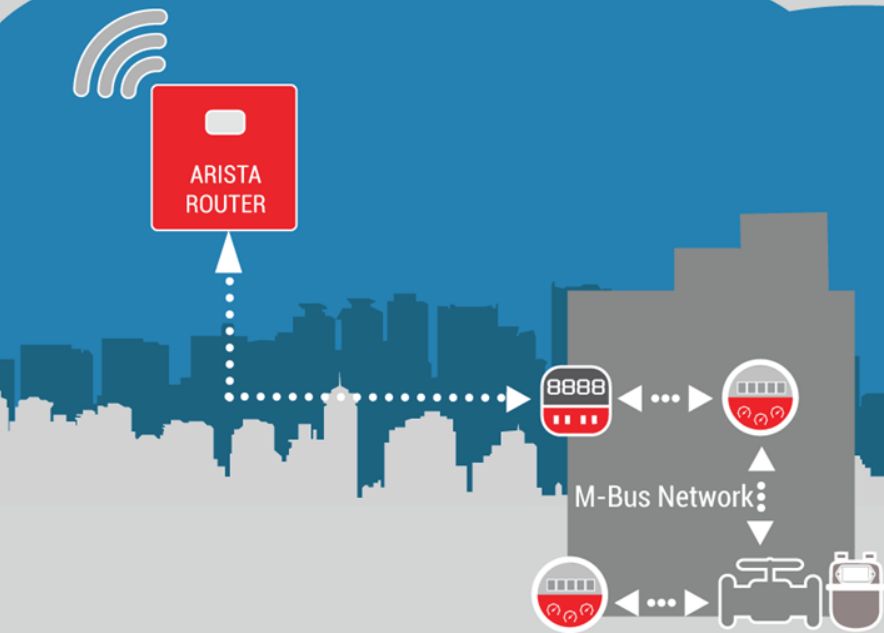
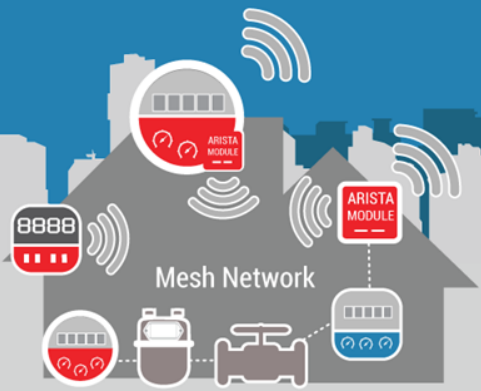


ARISTA Technology



GPRS/3G
VPN Tunnel

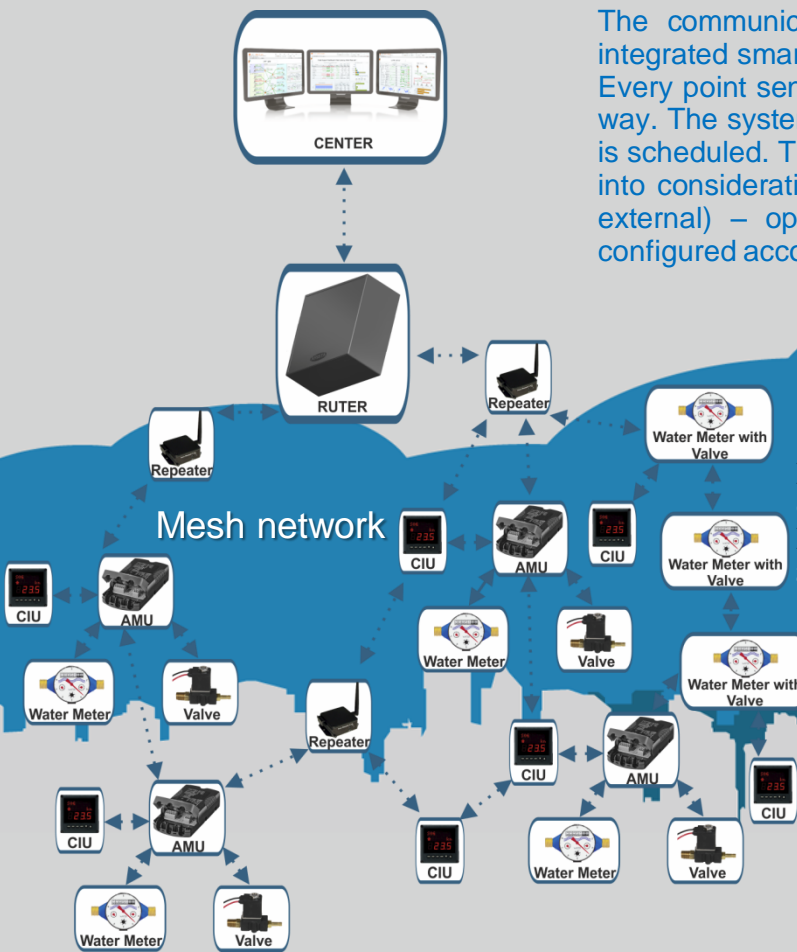
Communication





Arista Management System – for water and gas

The communication network between the end metering points (Arista Management Unit or integrated smart water meters) and the Data Concentrator is built independently for a short period. Every point sends and receives info to and from the points around it. The information flow is two-way. The system allows the reading of data to be done several times a day or as many times as it is scheduled. The requirements for low energy consumption for ensuring long battery life are taken into consideration. One of the main functions of the system is the control of a valve (internal or external) – opening and closing. The balance of the system (for water/gas distribution) is configured according to the requirements of the utility company and is calculated automatically.



Our experience showed us two approaches for building smart systems for water/gas:

- **In existing buildings** – set up a wireless ARISTA communication between the Data Concentrator and the end-point with a connected to it meter with pulse output.
- **In newly-built buildings** – setting up ARISTA with M-Bus communication between the end points (meters with M-Bus communication) and the M-Bus Data Concentrator.

Main functions of the end metering devices/AMUs:

- ❑ Distant status control
- ❑ Distant software update
- ❑ Alarms for unauthorized manipulation.
- ❑ Consumption profile
- ❑ Event log
- ❑ Valve control – open and close
- ❑ Integrated communication module – ARISTA radio or M-Bus
- ❑ Prepayment
- ❑ Consumption control/ limitation



Management Center

Standard IT solutions

WEB based interface

Supports meters from various manufacturers

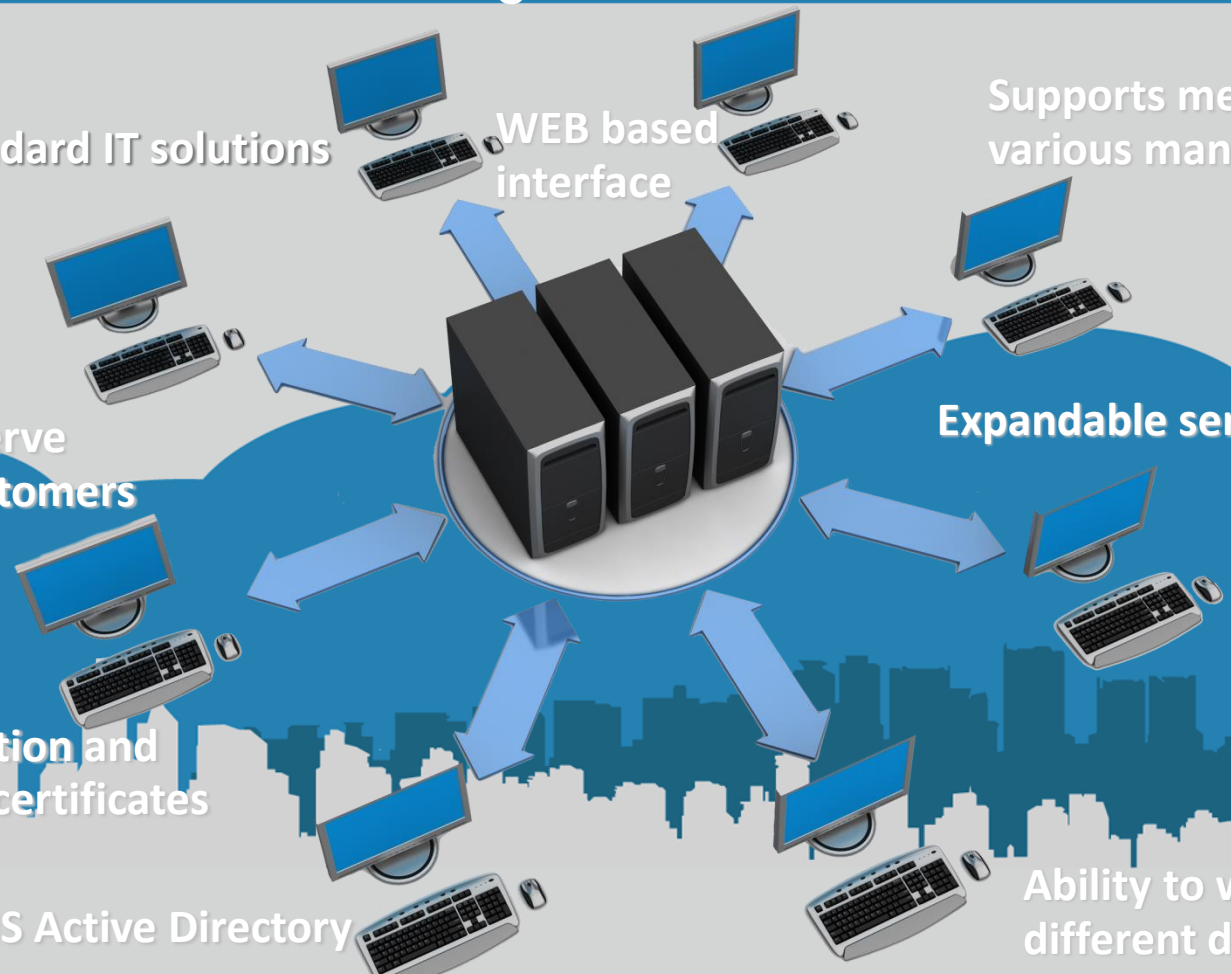
Designed to serve millions of customers

Expandable server architecture

Secure connection and work through certificates

Support for MS Active Directory

Ability to work with different databases



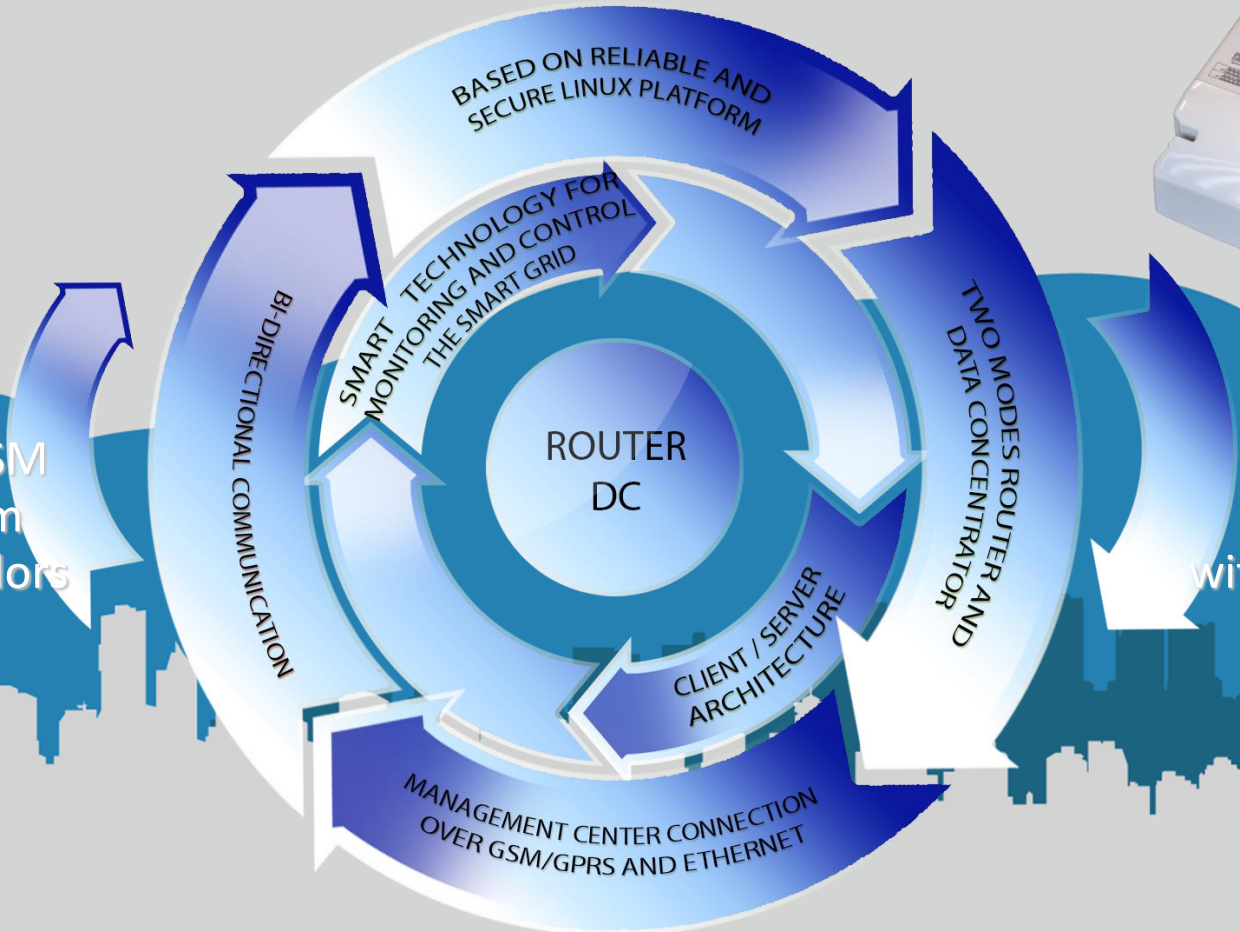


Router/Data concentrator



Supports DLSSM devices from different vendors

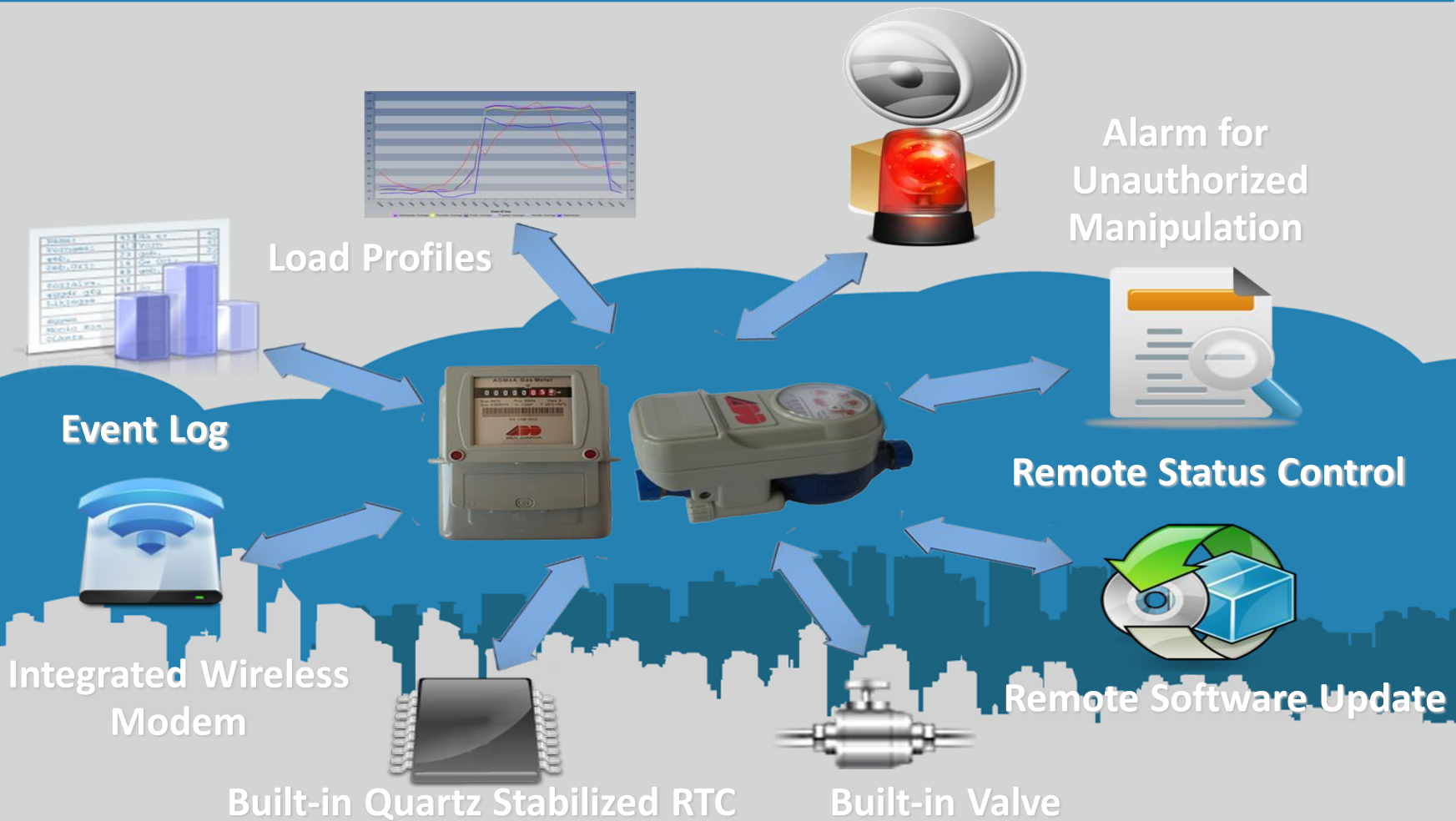
Wireless communication with Water meters



ROUTER
DC



Water/Gas meters





Prepayment

The center sends the prepaid limit to the customer's water/gas meter

Customers



Limit



Open Valve



Utility Company operators



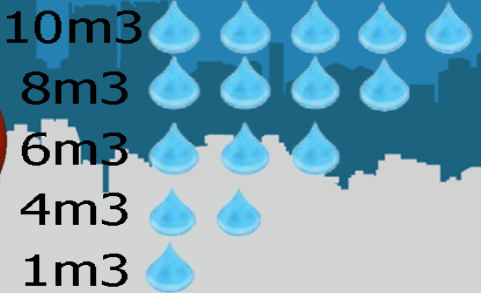
The water/gas meter automatically closes its valve when the limit is reached



Closed Valve



Consumption





Arista Management System

The system provides info about the consumption, the balance of the distribution grid, alarms, events. It controls and manages the process of water/gas supply and consumption.



Benefits of the system:

- Decrease of the non-technical losses. Control and discovery of the losses within 24h.
- Decrease of the costs on technical staff, meter reading, connection, disconnection and parameterization.
- Optimization of the processes of: reading, connection, disconnection, control of the quality, parameterization – all done via distant control. Easy and quick billing and breakdown control.
- Observation and supervision of the consumption and the parameters of the water consumed in real time, which allows the planning of the consumption.
- Possibility to add a consumption limit for the end consumers, as well as to introduce prepayment regimes through the control of valves.
- On-time and strictly regular billing.
- Dynamic price formation.
- Accurate database.
- Avoiding subjective errors.
- Cheap two-way communication.

The advantage of the ARISTA system is the possibility to make balance of the water which is supplied and consumed. The system is configured according to the needs and requirements of our customers. It gives them the opportunity to track losses, distribution problems, etc. This has a direct impact on the **financial results** of our customers and it allows taking quick and correct measures for solving the problems in a definite region.



Support



- Support in each country through domestic service provider
- Consultation during the first installation
- Connection to our customers over VPN
- Guarantee and after guarantee service
- Communication over phone, e-mail
- Trainings on our products
- Available web forum





Thank You

Web: add-bg.com

E-mail: office@add-bg.com

Tel: +359 32 623001

bul. Vasil Aprilov 141 V

4000 Plovdiv, Bulgaria

Fax: +359 32 623011